

Welcome to the Inaugural Meeting

Skagit County Board of Health Population Health Trust Advisory Committee

February 5th, 2015



Skagit County Board of Health - Population Health Trust

"Always working for a safer and healthier Skagit County"

*Kenneth A. Dahlstedt, Chair
Lisa Janicki, Commissioner
Ron Wesen, Commissioner*



Commissioners Welcome & Proclamation



Skagit County Board of Health - Population Health Trust

"Always working for a safer and healthier Skagit County"

*Kenneth A. Dahlstedt, Chair
Lisa Janicki, Commissioner
Ron Wesen, Commissioner*

Agenda

- Overview of the Population Health Trust
- Goals
- Member Introduction
- Review Trust Logistics
- Vision and Values
- Nominations for the Steering Group
- Name the Effort
- Closing



Skagit County Board of Health - Population Health Trust

"Always working for a safer and healthier Skagit County"

*Kenneth A. Dahlstedt, Chair
Lisa Janicki, Commissioner
Ron Wesen, Commissioner*

Why Should We Do This Work?

- Affordable Care Act – Triple Aim
- Washington State Health Improvement Plan
- North Sound Accountable Communities of Health
- Better Position Skagit County to Lead Community Efforts



Skagit County Board of Health - Population Health Trust

"Always working for a safer and healthier Skagit County"

*Kenneth A. Dahlstedt, Chair
Lisa Janicki, Commissioner
Ron Wesen, Commissioner*

Improving health in Mason County – one connection at a time.



Rethink!

Community Health Improvement Plan | Whatcom County

our community
our health

United Way of Lane County's
Community
Indicators
Report 2012



Kitsap Community Health Priorities (KCHP)

A healthier Kitsap County through a shared vision and coordinated action on health priorities

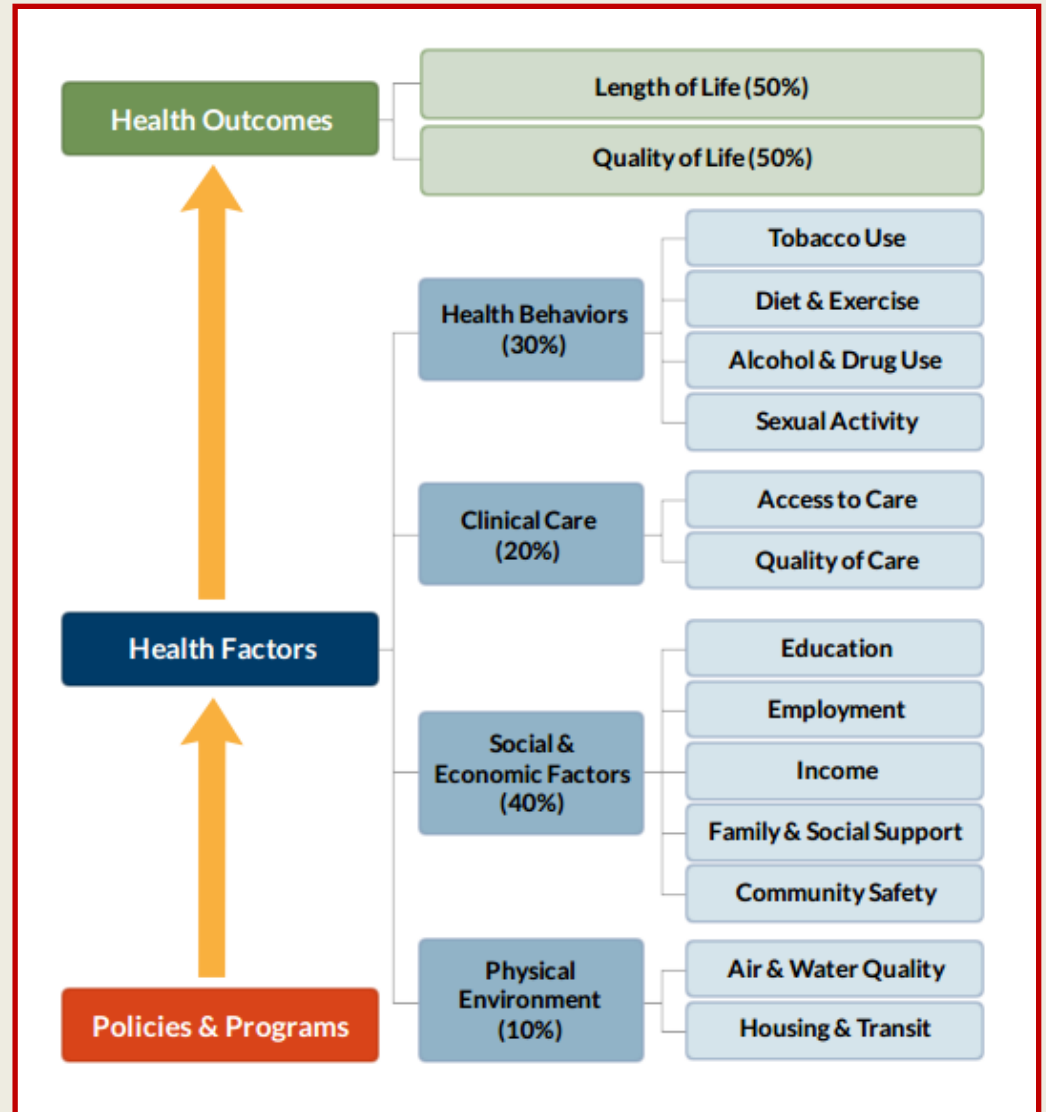


Skagit County Board of Health - Population Health Trust

"Always working for a safer and healthier Skagit County"

*Kenneth A. Dahlstedt, Chair
Lisa Janicki, Commissioner
Ron Wesen, Commissioner*

Planning Models



Skagit County Board of Health - Population Health Trust

“Always working for a safer and healthier Skagit County”

*Kenneth A. Dahlstedt, Chair
Lisa Janicki, Commissioner
Ron Wesen, Commissioner*

Planning Models

NACCHO
National Association of County & City Health Officials

 MAPP

Mobilizing for Action through
Planning and Partnerships (MAPP)



Skagit County Board of Health - Population Health Trust

"Always working for a safer and healthier Skagit County"

*Kenneth A. Dahlstedt, Chair
Lisa Janicki, Commissioner
Ron Wesen, Commissioner*

Assessment and Foundational Needs

- Inventory Resources (6)
- County SWOT Assessment (5)
- Metrics and Data (2)
- RWJ Integration (1)
- Role Clarification and Vision (2)

Moving Toward Action

- Identifying Goals (6)
- Improve Practices (10)
- Strategies (2)

Community Alignment and Engagement (3)

Survey Results (n=11)



Skagit County Board of Health - Population Health Trust

"Always working for a safer and healthier Skagit County"

*Kenneth A. Dahlstedt, Chair
Lisa Janicki, Commissioner
Ron Wesen, Commissioner*

Goals of the Population Health Trust

- Evaluate Skagit County Community Health and write an Improvement Plan
- Regularly report findings to the Board of Health
- Identify Action Items that will elevate the health of our neighbors and community members



Skagit County Board of Health - Population Health Trust

"Always working for a safer and healthier Skagit County"

*Kenneth A. Dahlstedt, Chair
Lisa Janicki, Commissioner
Ron Wesen, Commissioner*

Phase One-2015

• **Planning**

Phase Two-2016

• **Action**



Skagit County Board of Health - Population Health Trust

"Always working for a safer and healthier Skagit County"

*Kenneth A. Dahlstedt, Chair
Lisa Janicki, Commissioner
Ron Wesen, Commissioner*

Planning - 2015

Organize and Plan

Vision and Values

Assessment

Strategic Issues
Identified

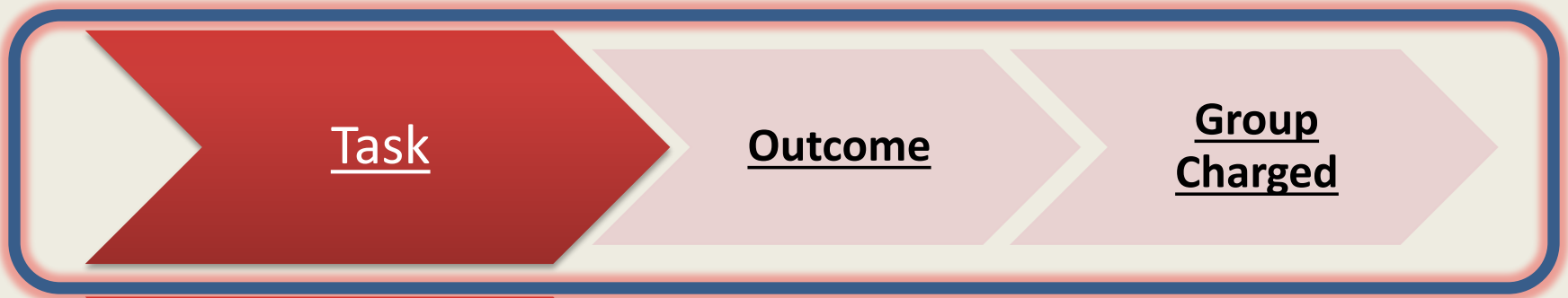
Goals



Skagit County Board of Health - Population Health Trust

"Always working for a safer and healthier Skagit County"

*Kenneth A. Dahlstedt, Chair
Lisa Janicki, Commissioner
Ron Wesen, Commissioner*



Community Health Status Assessment

Community Health Profile

Sub Committee Community

Community Themes and Strengths Assessment

Asset Maps

Sub Committee Community

Forces of Change

Trends, Factors and Events

Population Health Trust



Skagit County Board of Health - Population Health Trust

"Always working for a safer and healthier Skagit County"

*Kenneth A. Dahlstedt, Chair
Lisa Janicki, Commissioner
Ron Wesen, Commissioner*

Action - 2016

Review Goals

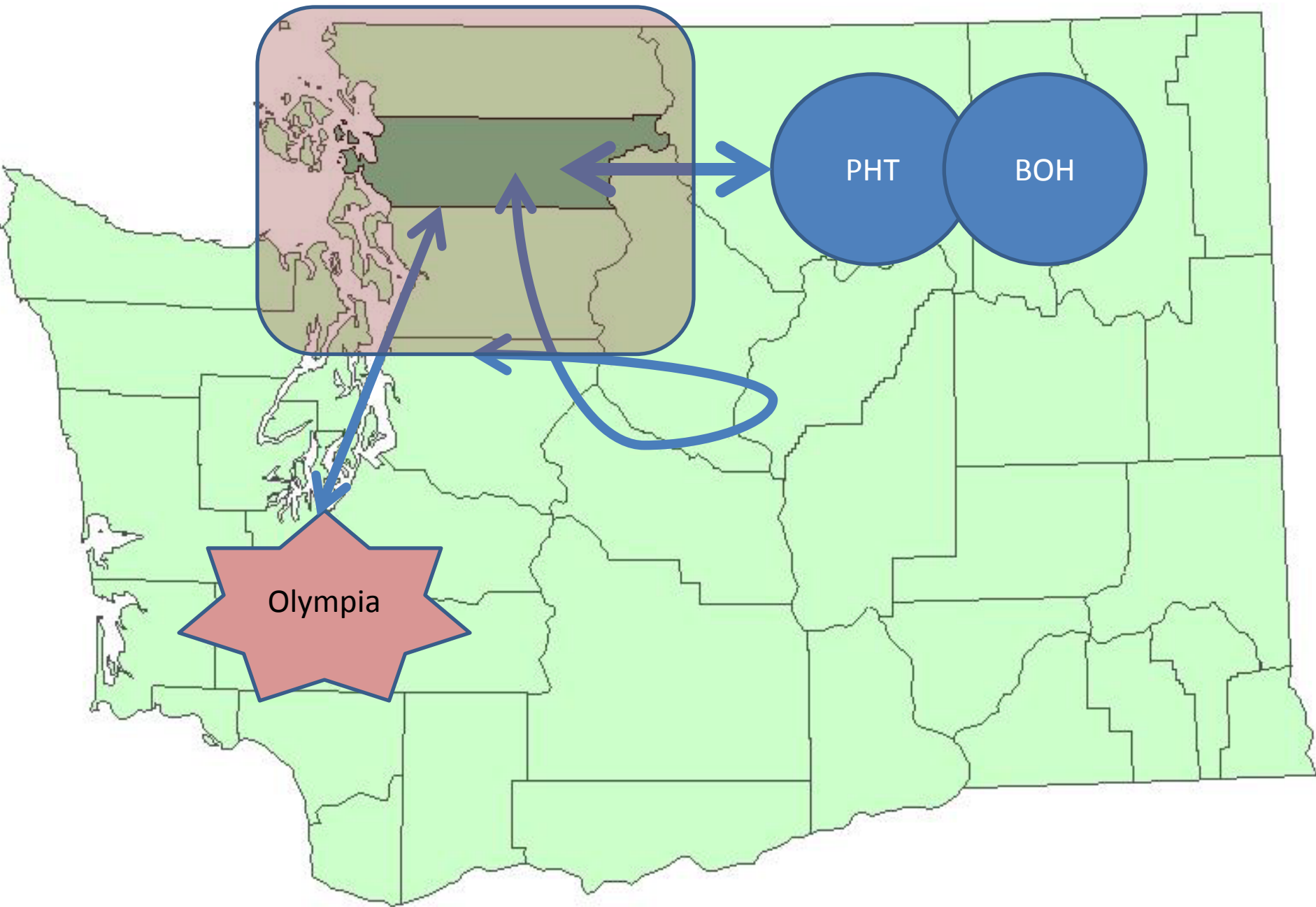
Action Steps



Skagit County Board of Health - Population Health Trust

"Always working for a safer and healthier Skagit County"

*Kenneth A. Dahlstedt, Chair
Lisa Janicki, Commissioner
Ron Wesen, Commissioner*



Olympia

PHT

BOH

Introductions

How will this work make a difference for your service sector?



**EMERGENCY
MEDICAL
SERVICES**



**North Sound
Mental Health
Administration**



Skagit County Board of Health - Population Health Trust

"Always working for a safer and healthier Skagit County"

*Kenneth A. Dahlstedt, Chair
Lisa Janicki, Commissioner
Ron Wesen, Commissioner*



15 Minutes



Skagit County Board of Health - Population Health Trust

"Always working for a safer and healthier Skagit County"

*Kenneth A. Dahlstedt, Chair
Lisa Janicki, Commissioner
Ron Wesen, Commissioner*

Logistics

- Binders
- Post to Web Site
- List-serve
- Meeting Times & Locations (April 9th)
- Your Public Information?



Skagit County Board of Health - Population Health Trust

"Always working for a safer and healthier Skagit County"

*Kenneth A. Dahlstedt, Chair
Lisa Janicki, Commissioner
Ron Wesen, Commissioner*

Think BIG!

A Holistic Approach to Community Development in Minneapolis-St. Paul



Skagit County Board of Health - Population Health Trust

"Always working for a safer and healthier Skagit County"

*Kenneth A. Dahlstedt, Chair
Lisa Janicki, Commissioner
Ron Wesen, Commissioner*

Robert Wood Johnson
“Building a Culture of
Health”

Kitsap County
A healthier Kitsap County
through a shared vision
and coordinated action on
health priorities

Mason Matters
“Creating a Healthy
Future”

Yamhill Community
“A unified healthy community that
celebrates physical, mental,
emotional, spiritual, and social
well-being.”

**Sonoma County Upstream
Investments**
In Sonoma County, poverty is
eliminated and all people have an
equal opportunity for quality
education and good health in
nurturing home and community
environments.



Skagit County Board of Health - Population Health Trust

“Always working for a safer and healthier Skagit County”

*Kenneth A. Dahlstedt, Chair
Lisa Janicki, Commissioner
Ron Wesen, Commissioner*

Vision Statement Process

- Form groups of 4-5
- Review Vision Statements from survey
- Review word puzzle summary
- Use the two sources to write a short sentence or pick 1-2 words that are essential for our Vision Statement
- Skagit County is, “.....”



Skagit County Board of Health - Population Health Trust

“Always working for a safer and healthier Skagit County”

*Kenneth A. Dahlstedt, Chair
Lisa Janicki, Commissioner
Ron Wesen, Commissioner*



Skagit County Board of Health - Population Health Trust

“Always working for a safer and healthier Skagit County”

*Kenneth A. Dahlstedt, Chair
 Lisa Janicki, Commissioner
 Ron Wesen, Commissioner*



Values to Guide Our Collective Efforts

- Form groups of 4-5
- Review Values Statements from survey
- Review word puzzle summary
- Use the two sources and select up to 5 value words or 2-3 phrases that should guide our work together



Skagit County Board of Health - Population Health Trust

"Always working for a safer and healthier Skagit County"

*Kenneth A. Dahlstedt, Chair
Lisa Janicki, Commissioner
Ron Wesen, Commissioner*



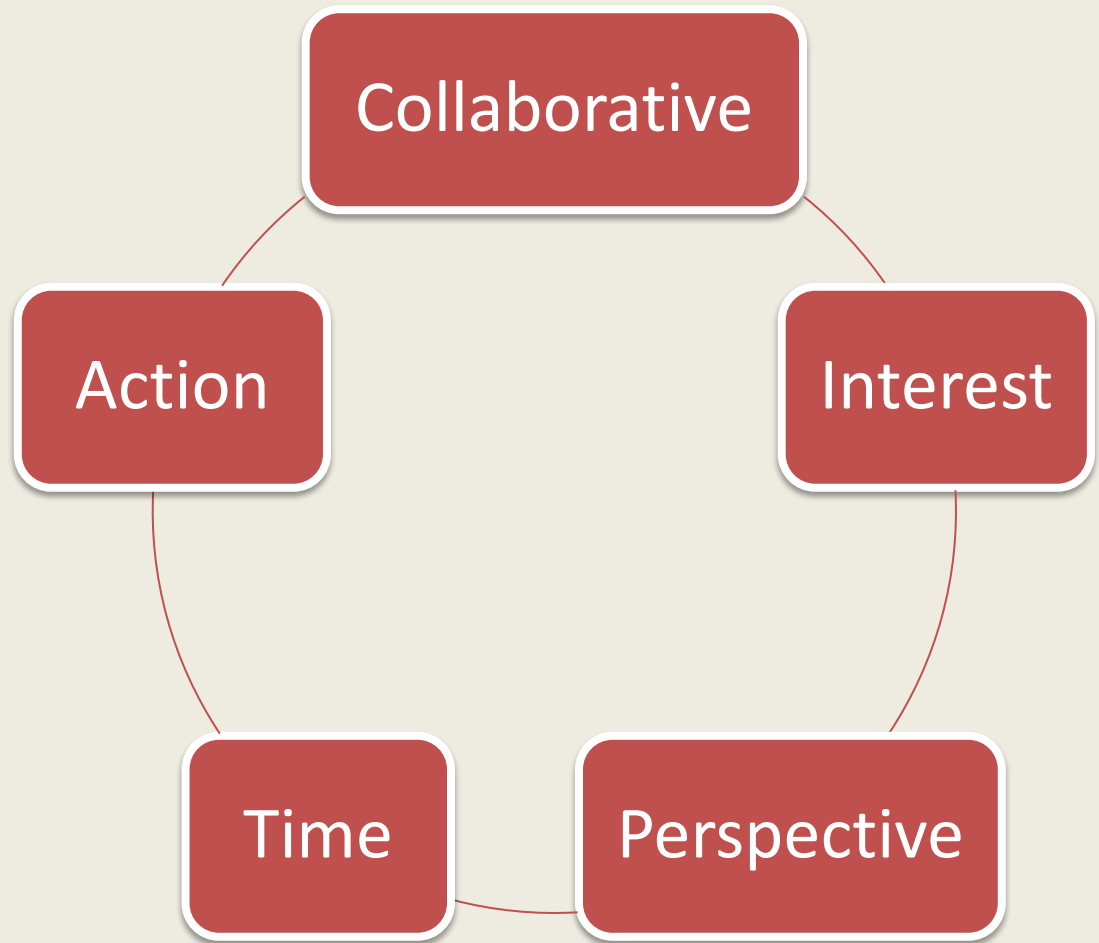
Skagit County Board of Health - Population Health Trust

"Always working for a safer and healthier Skagit County"

*Kenneth A. Dahlstedt, Chair
 Lisa Janicki, Commissioner
 Ron Wesen, Commissioner*

Volunteers and Nominations for Steering Committee

Up to 6 people



Skagit County Board of Health - Population Health Trust

"Always working for a safer and healthier Skagit County"

*Kenneth A. Dahlstedt, Chair
Lisa Janicki, Commissioner
Ron Wesen, Commissioner*

Steering Committee Meeting Day/Time

Second Wednesday or Thursday of the Month	
Wednesday, Feb 11	Thursday Feb 12
1:00-2:30	1:00-2:30
Third Wednesday or Thursday of the Month	
Wednesday, Feb 18	Thursday Feb 19
1:00-2:30	1:00-2:30



Skagit County Board of Health - Population Health Trust

“Always working for a safer and healthier Skagit County”

*Kenneth A. Dahlstedt, Chair
 Lisa Janicki, Commissioner
 Ron Wesen, Commissioner*



Name The Effort



Skagit County Board of Health - Population Health Trust

"Always working for a safer and healthier Skagit County"

*Kenneth A. Dahlstedt, Chair
Lisa Janicki, Commissioner
Ron Wesen, Commissioner*

Closing Remarks

- **Next meeting March 5th**
- **Breakfast Social: 8:30**
- **Meeting: 9:00 to 12:00**



Skagit County Board of Health - Population Health Trust

"Always working for a safer and healthier Skagit County"

*Kenneth A. Dahlstedt, Chair
Lisa Janicki, Commissioner
Ron Wesen, Commissioner*

Thank You

- Finalize Vision & Values
- Operating Principles: (roles, rules, expectations, decision making process)
- Collective Impact
- Robert Wood Johnson Health Rankings
- Assessment Process Timeline and Next Steps



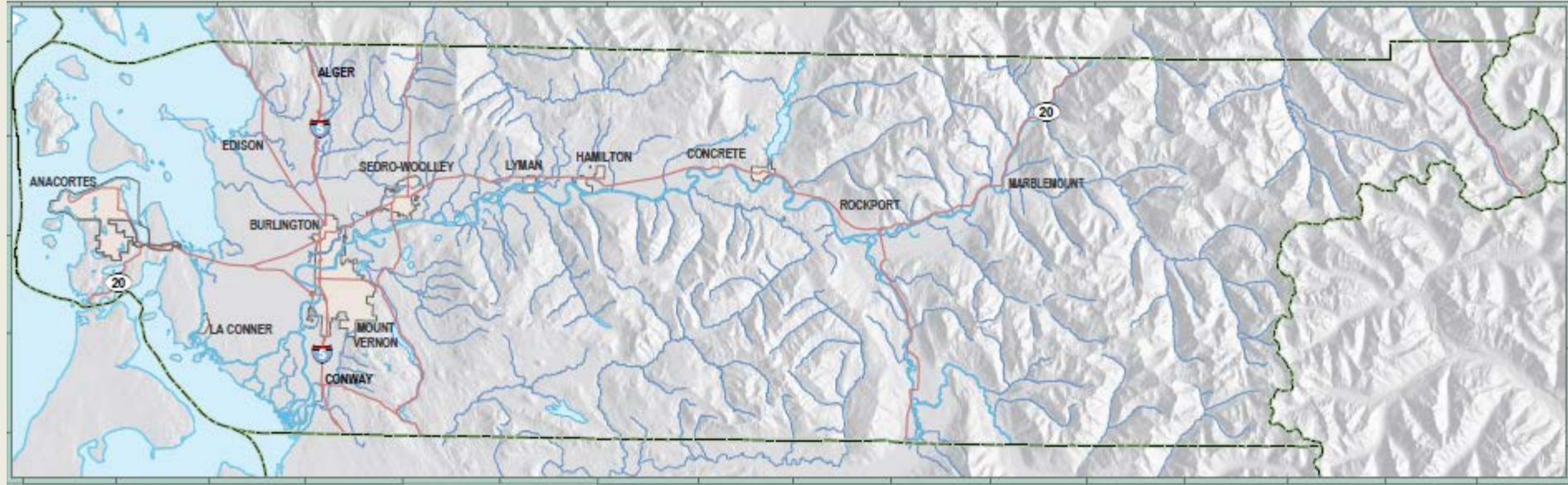
Skagit County Board of Health - Population Health Trust

"Always working for a safer and healthier Skagit County"

*Kenneth A. Dahlstedt, Chair
Lisa Janicki, Commissioner
Ron Wesen, Commissioner*

Skagit County Board of Health

Population Health Trust Advisory Committee



State Efforts

Regional Efforts



Skagit County Board of Health - Population Health Trust

"Always working for a safer and healthier Skagit County"

*Kenneth A. Dahlstedt, Chair
Lisa Janicki, Commissioner
Ron Wesen, Commissioner*